

Research center of KOSEN Image & future expectations



- Enhancement of the interaction space
- Enhancement & maintenance of shared facilities
- Implementation of advanced research theme
- Securing research space for collaboration partner

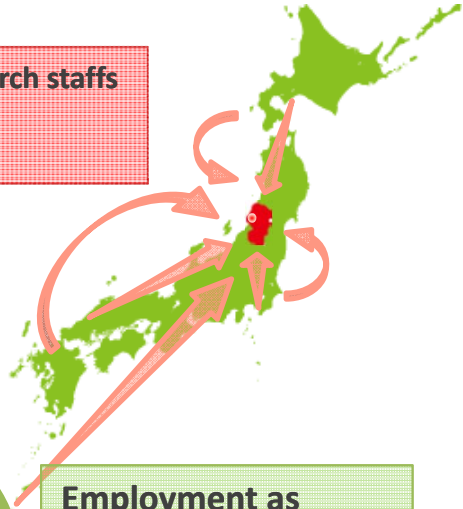
- ◆ Engage in research in the calm-vivid nature & rich food culture
- ◆ Collaboration with cutting-edge biotechnology research base
- ◆ Entrepreneurship
- ◆ Enriched environment

All colleges of
KOSEN

National Institute of Technology's
research zone: realization of
researchers' dreams!

- Open lab for teaching & research staffs
- Students internship
- Researchers' training program

Kosen - Appplied science
Research Center
(K-ARC)



Employment as
engineer/researcher
in the industry

Collaborative research

Collaborative research

Educational and
research organizations

Collaborative research

Industry

- Companies based in Tsuruoka Science Park
- National companies

Details of K-ARC (as of December 2015)



Resident coordinator
(research advice,
career education etc.)

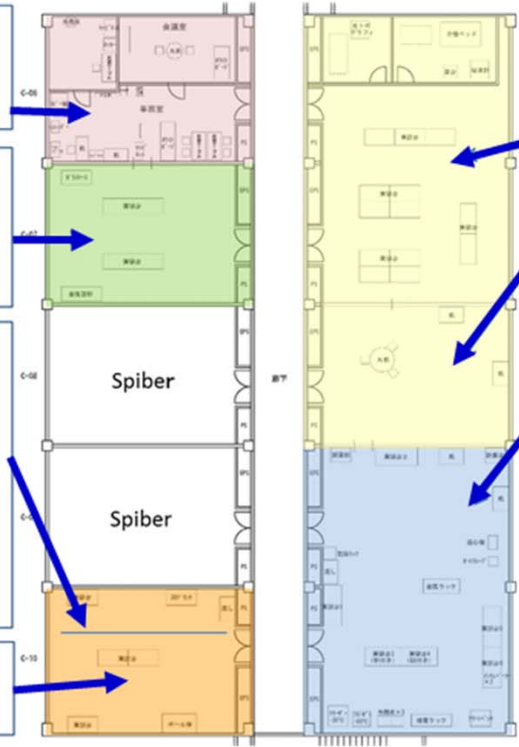
Office room,
meeting room,
reception

ICT for Agriculture
program
Prof. Kazuya Kanda
other related faculty

Manufacturing
platform program
(along with training
factory)

Prof. Toma
Prof. Hiroshi Tanaka
Tsuruoka Fab (3D printer etc.)
JST matching planner

Research & lecture
area (30 people max.)



JST strategic
creative research
promotion, ACCEL
related lab

Functional Polymer
Material research course
visiting researchers

Metabolome
Analysis program

Assoc. Prof. Saito
Asst. Prof. Kubo



K-ARC(within KOSEN)

Plasma Science &
Engineering
program

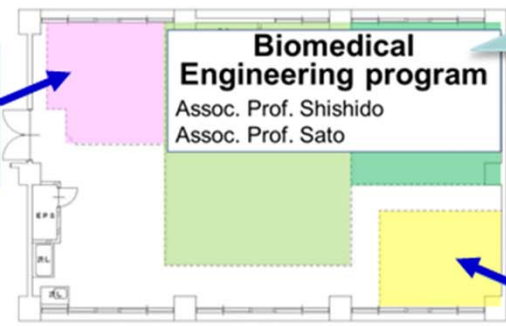
Prof. Hiroyuki Yoshiki

Biomedical
Engineering program

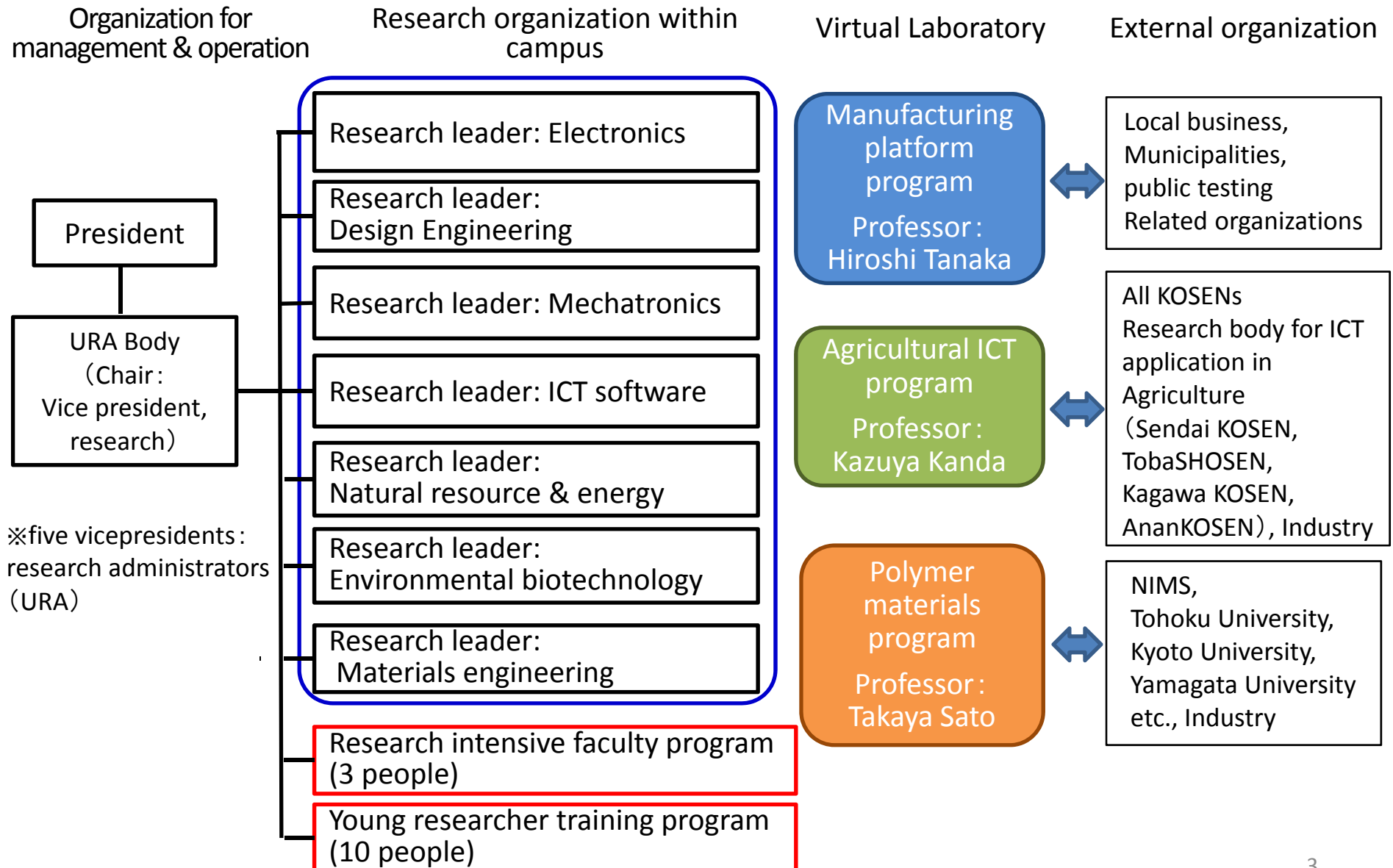
Assoc. Prof. Shishido
Assoc. Prof. Sato

Functional Polymer
Material program

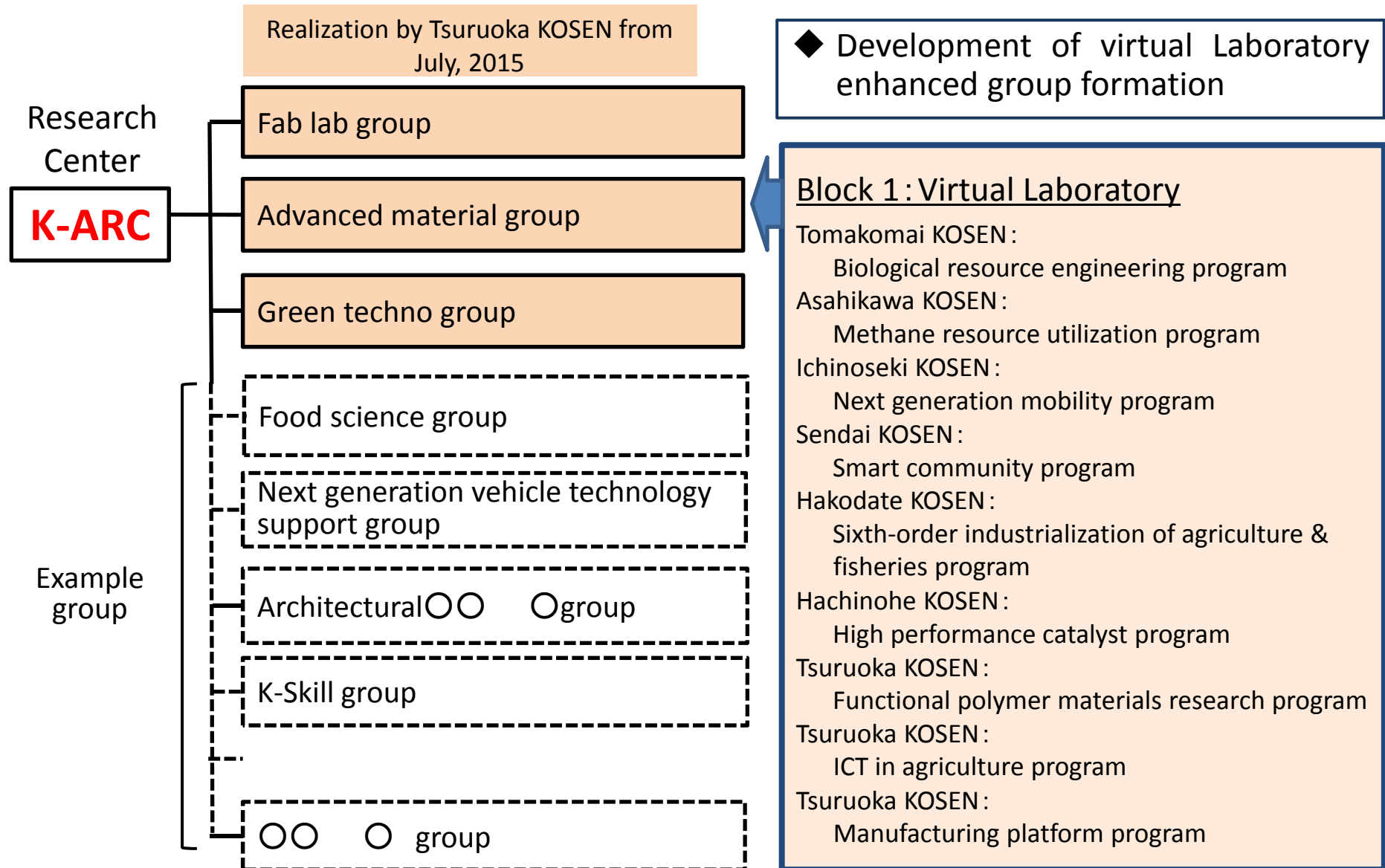
Assoc. Prof. Kagata



Research promotion system of Tsuruoka KOSEN



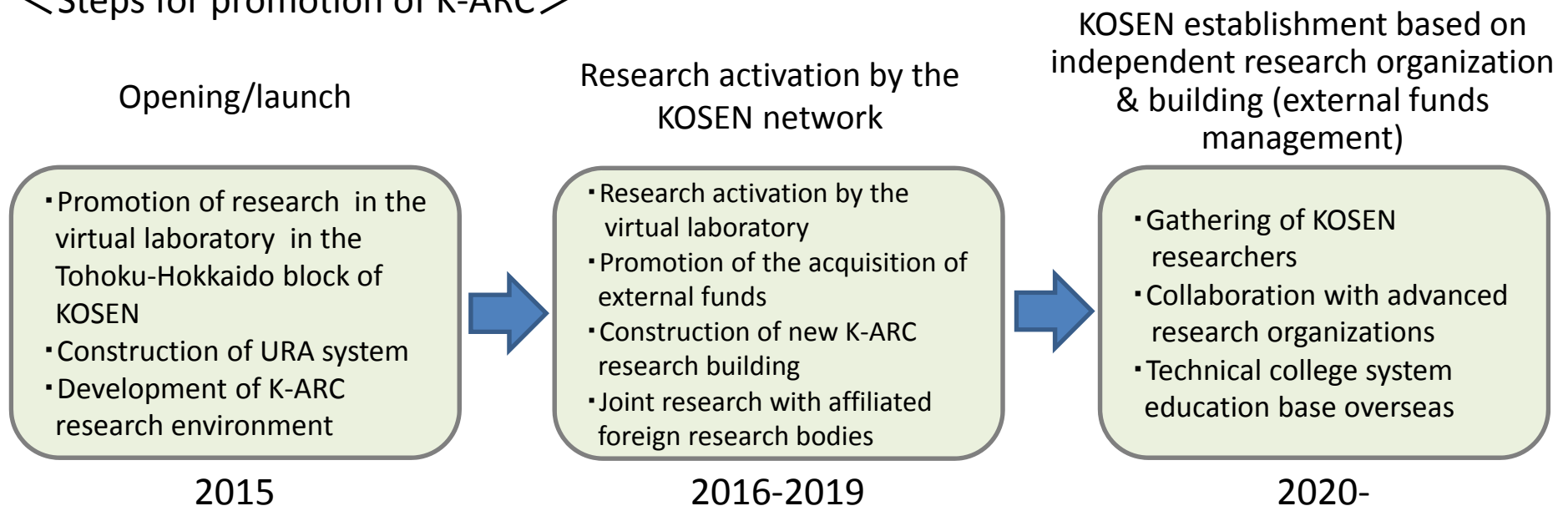
Evolution of national KOSEN into block (Virtual Laboratory)



Research center of KOSEN : Future of K-ARC

- Researchers are invited from each college of KOSEN. We are trying to build an independent research organization by research outcomes and external fundings.
- Realization of social experiments in collaboration with top level research organizations.
- With a view to promote cooperation with other entities in the science park, achieve enhancement in scale & content.
- Would act as a billboard to raise the presence of all KOSENs around the country

<Steps for promotion of K-ARC>



Advanced research and manufacturing (social implementation) to function as two wheels of the car